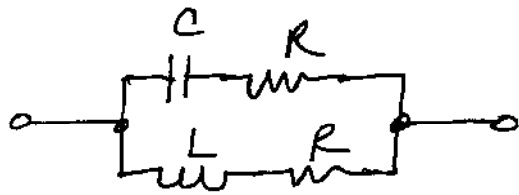


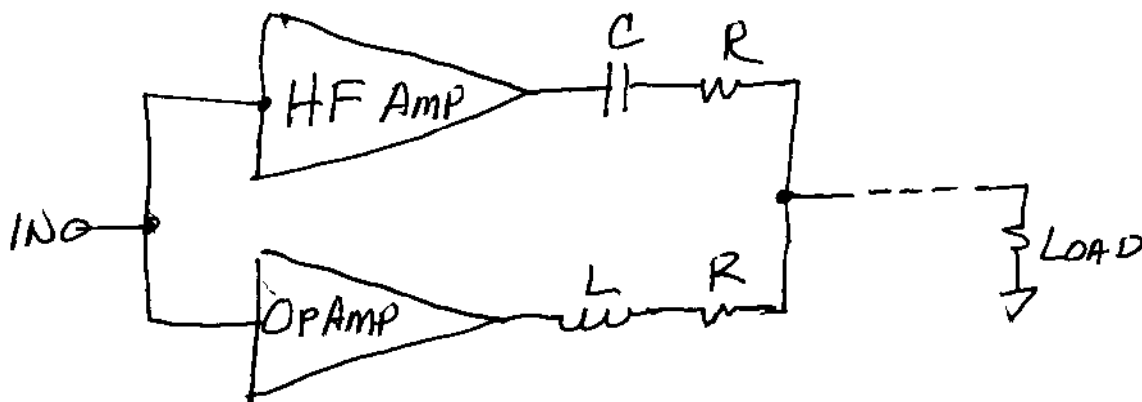
A TRICK I LEARNED LONG AGO. SO LONG AGO IT WAS TO COMPENSATE INDUCTIVE COUPLING TO THE EARPIECE OF TELEPHONES FOR 300 BAUD MODEMS 😊



LOOKS LIKE R FOR ALL FREQUENCIES PROVIDED

$$\frac{L}{C} = R^2$$

THUS A "CROSS-OVER" NETWORK FOR AN HF AMP/OPAMP COMBINATION WOULD BE!



OF COURSE THIS WILL NEED TWIDDLING TO ACCOUNT FOR EACH AMPLIFIER'S OUTPUT CHARACTERISTICS... PARTICULARLY ~~THE~~ OPAMP OUTPUT WILL NEED SOME BYPASS GAMES SINCE ITS OUTPUT Z WILL BE STRANGE AT HIGH FREQUENCIES.

—J. THOMPSON 7/4/2004—